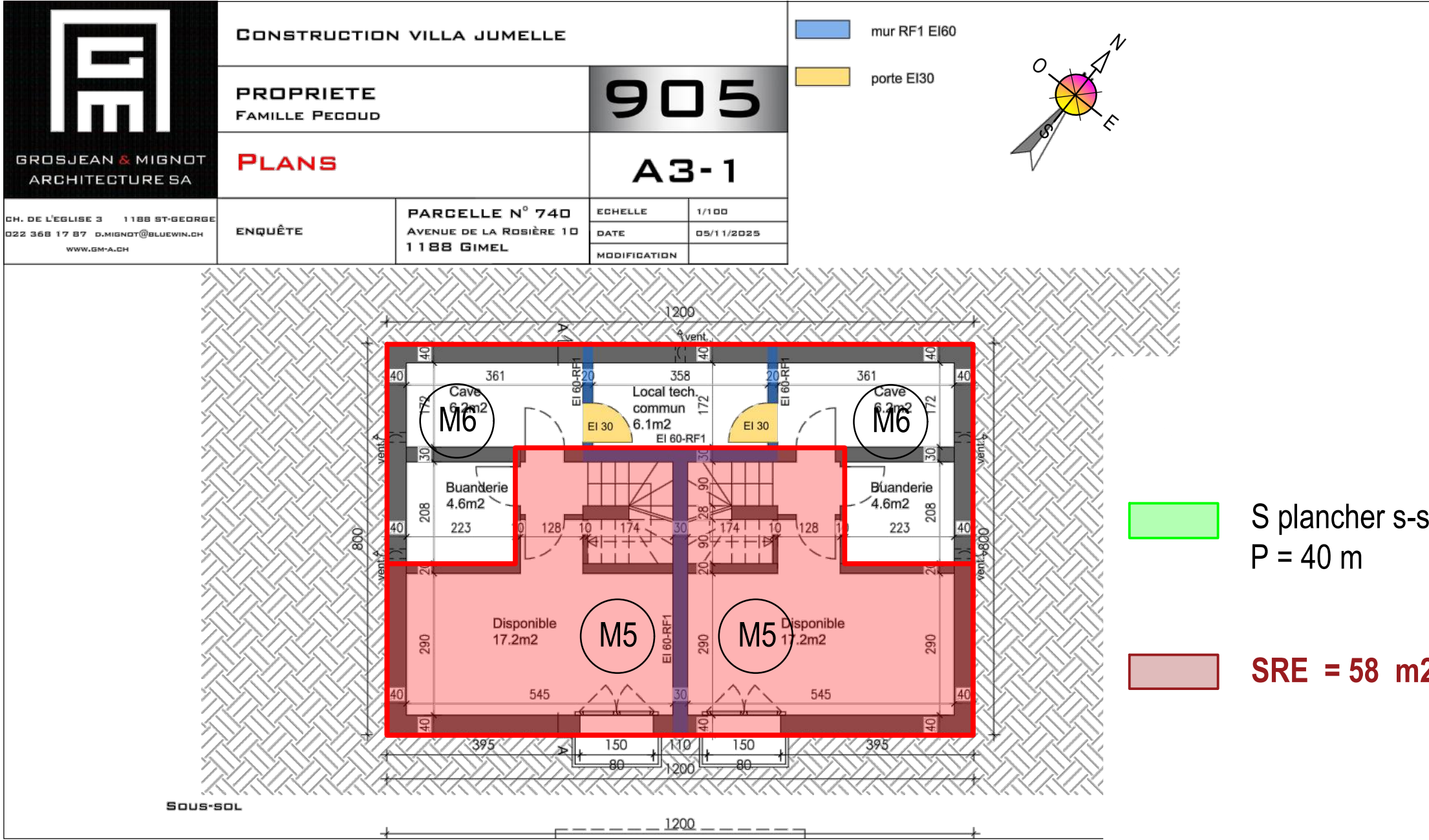


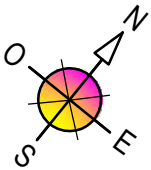
A
B
C
D
E
F

12345678



S plancher s-s c/terre = 96 m2
P = 40 m

SRE = 58 m2



Av. Général-Guisan 61b - 1800 Vevey

Projet :
Villa Jumelle

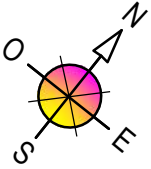
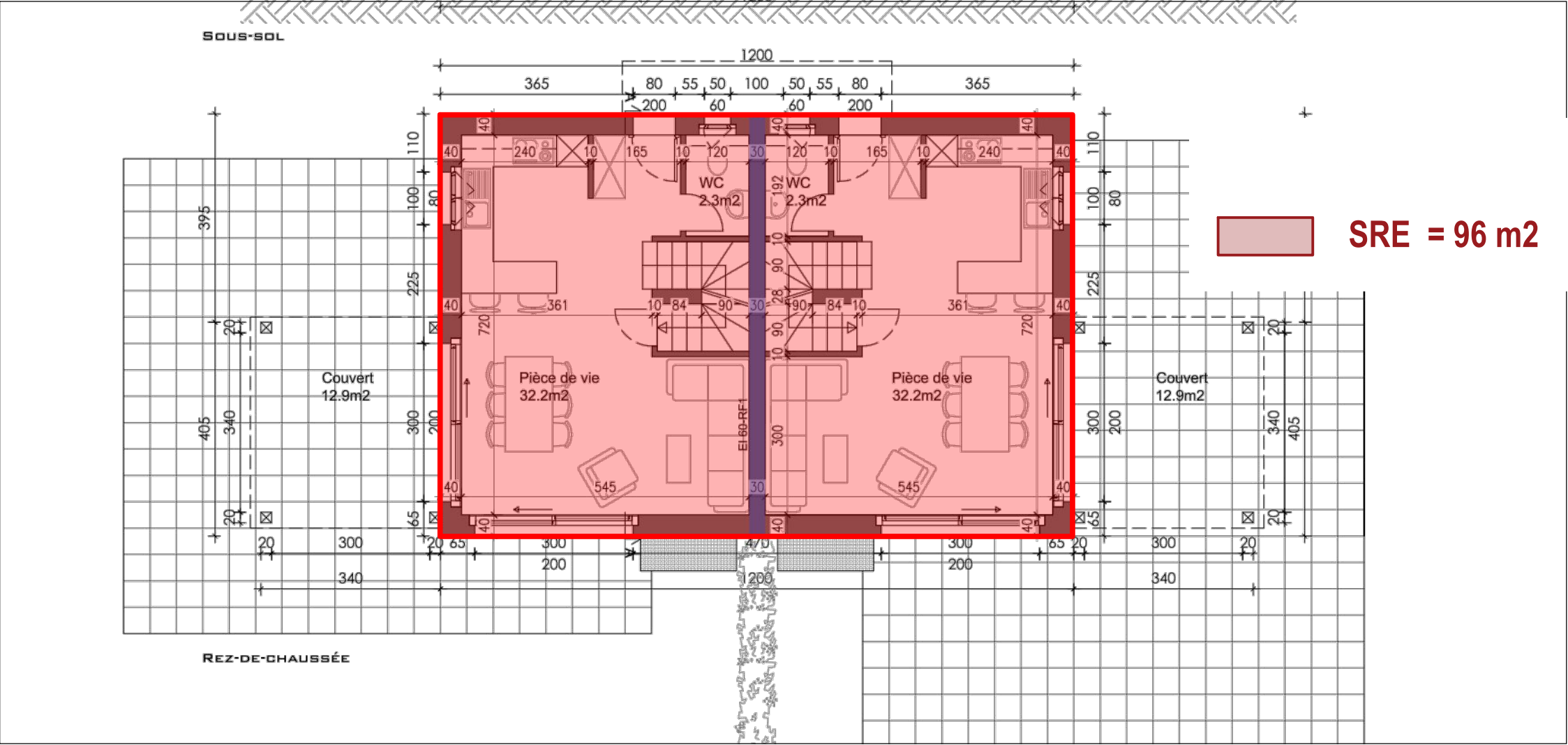
Lieu :
1188 Gimel

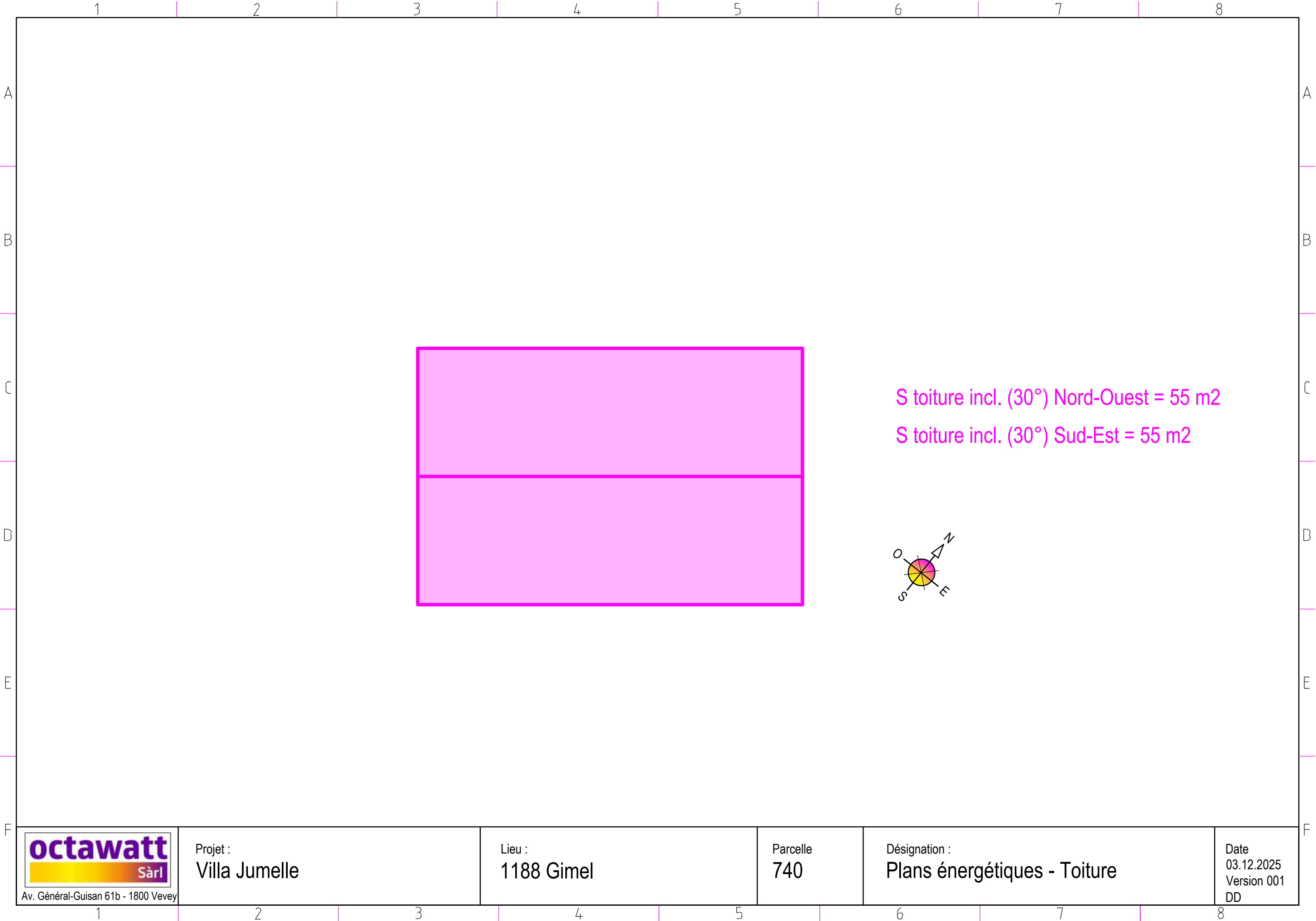
Parcelle
740

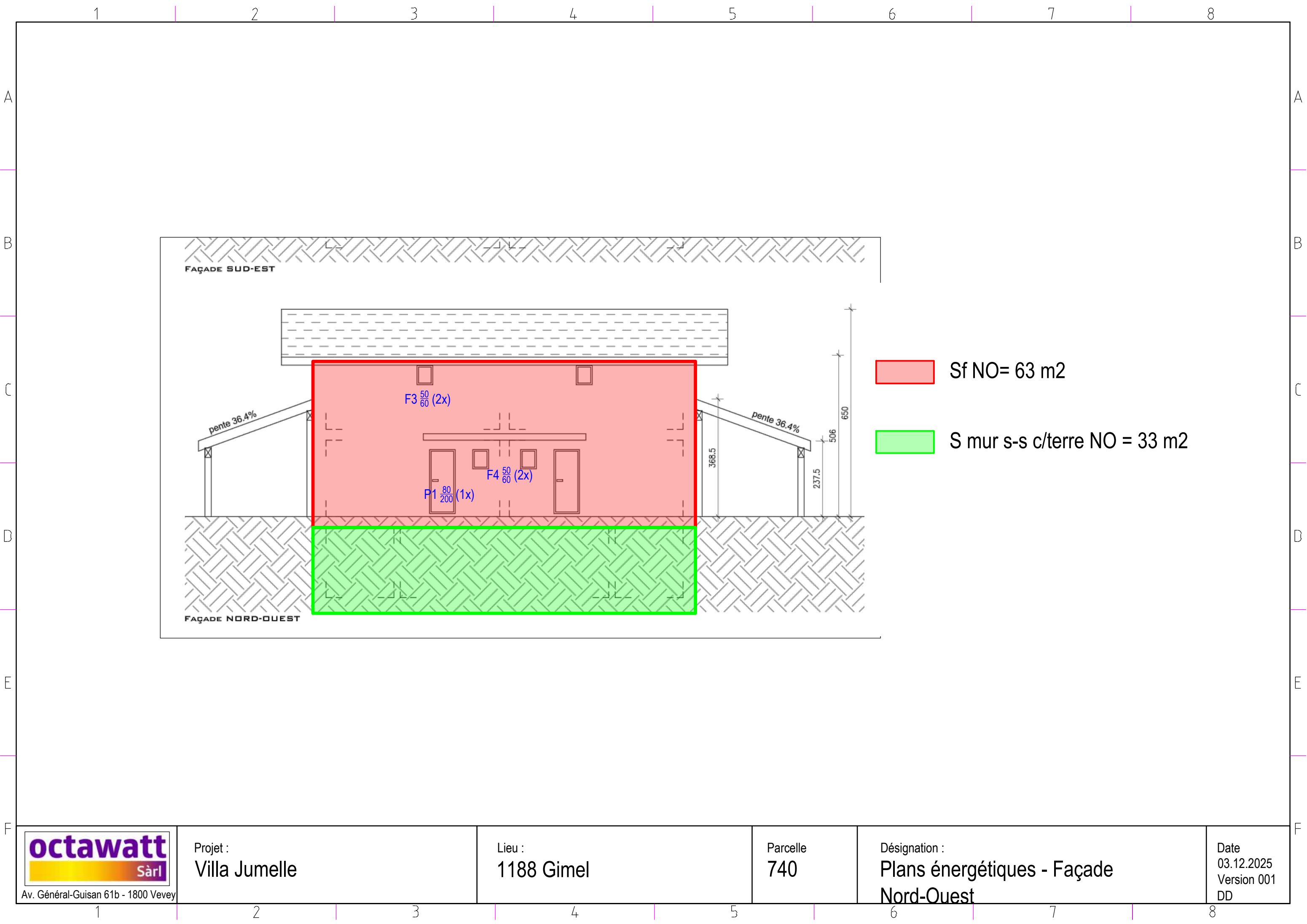
Désignation :
Plans énergétiques - Sous-Sol

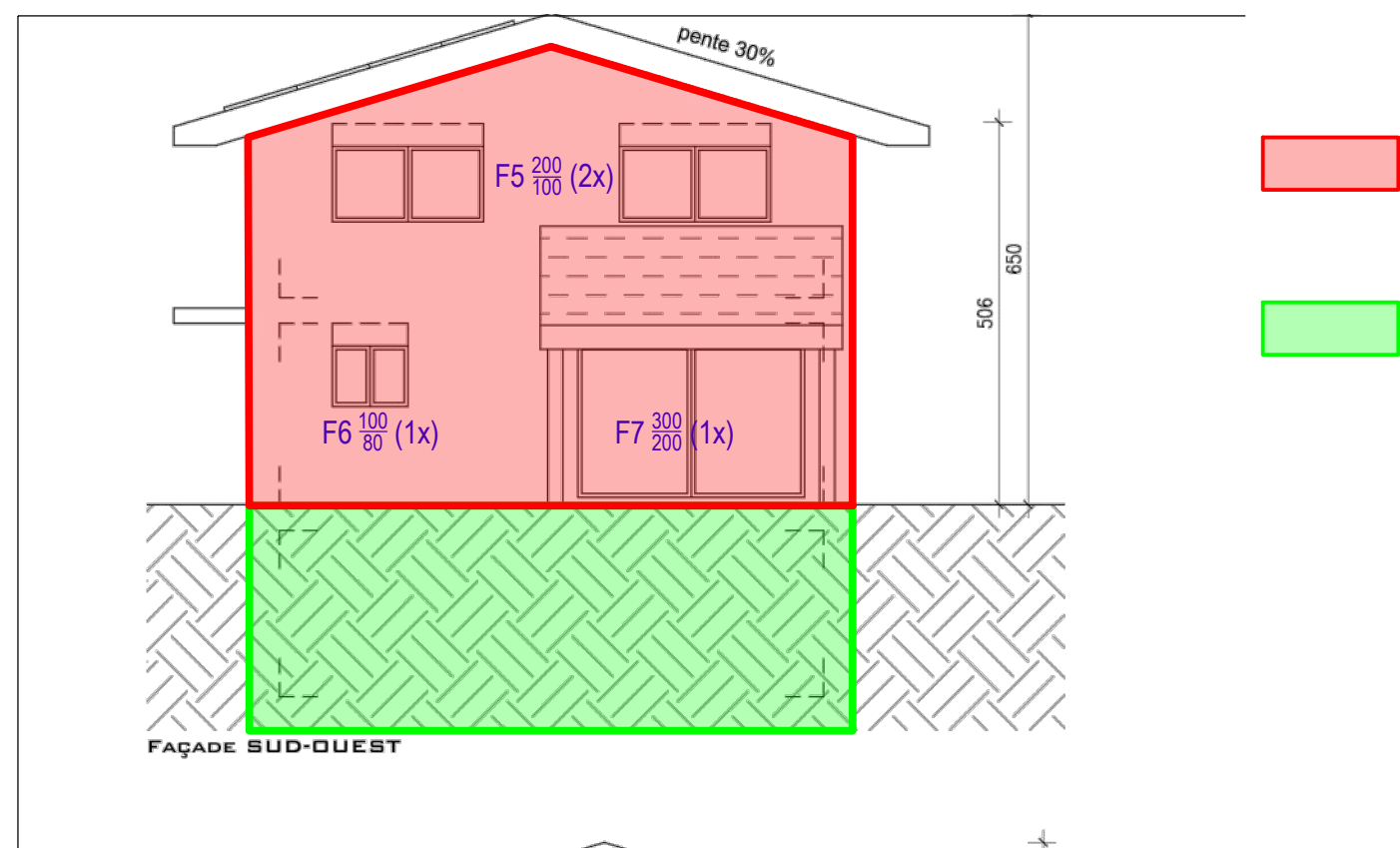
Date
03.12.2025
Version 001
DD

12345678









 Sf SO= 44 m2

S mur s-s c/terre SO = 24 m2